



LTL863

Radial truck tire (Regional Trailer)



Size	Ply Rating	Load Index	Speed Symbols	Standard Rim	Max Load and Inflation Pressure			Section Width (mm)	Tread Depth (mm)	
					Dual kg	Single kpa	Overall Diameter (mm)			
385/65R22.5	18	158	K	11.75	---	4250	850	1072	389	16.5
385/65R22.5	20	160(158)	J(L)	11.75	---	4500	900	1072	389	16.5
385/65R22.5	24	164	J	11.75	---	5000	900	1072	389	16.5
385/65R22.5	18	158	K	12.25	---	4250	850	996	386	16.5
385/65R22.5	20	160(158)	J(L)	12.25	---	4500	900	996	386	16.5

1. Typical combined pattern design offers optimal trailer performance.
2. Low rolling resistance.
3. Wear-resistance compound, reducing shifting to prevent uneven wear.



KTD300

Radial truck tire

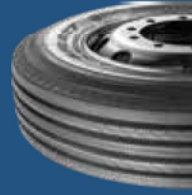
(For national and regional transportation)



Size	Ply Rating	Load Index	Speed Symbols	Standard Rim	Max Load and Inflation Pressure			Section Width (mm)	Tread Depth (mm)		
					Dual kg	Single kpa	Overall Diameter (mm)				
295/60R22.5	16	150/147	L	9.00	3075	900	3350	900	926	292	18.0
295/60R22.5	16	152/148	M	9.00	3150	850	3550	850	1044	298	20.5
315/60R22.5	18	154/150	M	9.00	3350	825	3750	825	1076	312	22.0
315/60R22.5	20	156/150(154/150)	L(M)	9.00	3350	850	4000	850	1076	312	22.0
315/70R22.5	16	154/150(152/148)	L(M)	9.00	3350	900	3750	900	1014	312	20.0
315/60R22.5	16	152/148	L	9.75	3150	900	3550	900	950	313	19.5

Suitable for the drive axle of trucks running under an wide range of use, from highway to light unpaved road.

1. Optimization of the shoulder block ,improving resistance to shoulder damage.
2. Lasting grip and stability ,with M+S and 3PMSF marking.
3. High wear resistance.



LFL827

Radial truck tire (Regional Steer)



Size	Ply Rating	Load Index	Speed Symbols	Standard Rim	Max Load and Inflation Pressure			Section Width (mm)	Tread Depth (mm)	
					Dual kg	Single kpa	Overall Diameter (mm)			
385/65R22.5	18	158	K	11.75	---	4250	850	1072	389	13.0
385/65R22.5	20	160	J	11.75	---	4500	900	1072	389	13.0

1. New technology for tire weight is reduced.
2. Low eccentric wear.
3. Low fuel consumption.
4. Good handling.



KTS300

Radial truck tire

(For national and regional transportation)



Size	Ply Rating	Load Index	Speed Symbols	Standard Rim	Max Load and Inflation Pressure			Overall Diameter (mm)	Section Width (mm)	Tread Depth (mm)	
					Dual kg	Single kpa	Overall Diameter (mm)				
295/60R22.5	16	150/147	L	9.00	3075	900	3350	900	926	292	14.0
295/60R22.5	18	154/149	L	9.00	3250	850	3750	850	1044	298	---
295/60R22.5	16	152/148	M	9.00	3150	850	3550	850	1044	298	---
315/60R22.5	18	154/150	M	9.00	3350	825	3750	825	1076	312	15.5
315/60R22.5	20	156/150(154/150)	L(M)	9.00	3350	850	4000	850	1076	312	15.5
315/60R22.5	20	157/154	L	9.00	3750	900	4125	900	1076	312	15.5
315/60R22.5	22	158/150(154/150)	L(M)	9.00	3350	900	4250	900	1076	312	15.5
315/70R22.5	16	154/150(152/148)	L(M)	9.00	3350	900	3750	900	1014	312	15.5
315/70R22.5	18	156/150(154/150)	L(M)	9.00	3350	900	4000	900	1014	312	15.5
315/60R22.5	16	152/148	L	9.75	3150	900	3550	900	950	313	---
315/60R22.5	18	154/150(152/148)	L(M)	9.75	3350	900	3750	900	950	313	---
385/65R22.5	18	158	K(L)	12.25	---	4250	850	996	386	13.5	---
385/65R22.5	20	160(158)	K(L)	12.25	---	4500	900	996	386	13.5	---
385/65R22.5	20	160(158)	K(L)	11.75	---	4500	900	1072	389	15.5	---
385/65R22.5	24	164(158)	K(L)	11.75	---	5000	900	1072	389	15.5	---

Suitable for the steer axle of trucks running under an wide range of use, from highway to light unpaved road.

1. Optimization of the shoulder block ,improving resistance to shoulder damage.
2. Lasting grip and stability ,with stone rejection design.
3. High wear resistance.



LLF01

Radial truck tire

Size	Ply Rating	Load Index	Speed Symbols	Max Load and Inflation Pressure			Overall Diameter (mm)	Section Width (mm)	Tread Depth (mm)		
				Dual kg	Single kg	kpa					
11R22.5	16	148/145	M	8.25	2900	850	3150	850	1054	279	14.5
295/60R22.5	16	149/146	M	9.00	3000	900	3950	900	926	292	14.5

1. Special design for all position of buses and steer and trailer axle of trucks.
2. Good side-wear resistance.
3. High-speed performance.



LLF02

Radial truck tire

Size	Ply Rating	Load Index	Speed Symbols	Max Load and Inflation Pressure			Overall Diameter (mm)	Section Width (mm)	Tread Depth (mm)		
				Dual kg	Single kg	kpa					
295/60R22.5	16	152/148	M	9.00	3150	850	3550	850	1044	298	14.5
295/60R22.5	18	152/149	M	9.00	3250	900	3550	900	1044	298	14.5
295/60R22.5	18	154/149	M	9.00	3250	825	3750	825	1076	312	14.5
315/60R22.5	20	158/150	L	9.00	3350	850	4000	850	1076	312	14.5
315/60R22.5	22	158/150(154/150)	L(M)	9.00	3350	900	4950	900	1076	312	14.5

1. Special design for all position of buses and steer and trailer axle of trucks.
2. Good side-wear resistance.
3. High-speed performance.



LTL812

Radial truck tire (Regional Steer)

Size	Ply Rating	Load Index	Speed Symbols	Max Load and Inflation Pressure			Overall Diameter (mm)	Section Width (mm)	Tread Depth (mm)		
				Dual kg	Single kg	kpa					
295/60R22.5	16	152/148	M	9.00	3150	850	3550	850	1044	298	17.0
295/60R22.5	18	152/149	M	9.00	3250	900	3550	900	1044	298	17.0
295/60R22.5	18	154/149	M	9.00	3250	850	3750	850	1044	298	17.0
315/60R22.5	18	154/150	M	9.00	3350	825	3750	825	1076	312	17.0
315/60R22.5	20	156/150	M	9.00	3350	850	4000	850	1076	312	17.0
315/60R22.5	22	158/150(154/150)	L(M)	9.00	3350	900	4250	900	1076	312	17.0
315/70R22.5	16	154/150(152/148)	L(M)	9.00	3350	900	3750	900	1014	312	17.0
315/70R22.5	18	156/150(154/150)	L(M)	9.00	3350	900	4000	900	1014	312	17.0

1. Long life.
2. Retreadability.
3. Low eccentric wear.



LFL185

Radial truck tire (Regional Steer)

Size	Ply Rating	Load Index	Speed Symbols	Max Load and Inflated Pressure			Overall Diameter (mm)	Section Width (mm)	Tread Depth (mm)		
				Standard Rim	Dual	Single					
295/80R22.5	16	152/148	M	9.00	3150	850	3650	850	1044	298	17.0
295/80R22.5	18	152/149	M	9.00	3200	900	3650	900	1044	298	17.0

1. Optimization of the shoulder and the proportion of pattern block in the middle.
2. Four straight groove matching S type variable Angle groove design and ensure good steering tyre and self-cleaning properties.
3. Ultra strong skeleton materials applications and Promote tire safety performance.
4. High wear resistance of new formula application and Wear mileage increases more than 20%.

LLA18

Radial Truck Tire

Size	Ply Rating	Load Index	Speed Symbols	Max Load and Inflated Pressure			Overall Diameter (mm)	Section Width (mm)	Tread Depth (mm)	
				Standard Rim	Dual	Single				
385/65R22.5	18	158	K	11.75	---	4250	850	1072	389	16.5
385/65R22.5	20	160	J	11.75	---	4500	900	1072	389	16.5

Suitable for the trailer axle of the trucks running on the high-grade road.

F820

Radial truck tire (Regional All position)

Size	Ply Rating	Load Index	Speed Symbols	Max Load and Inflated Pressure			Overall Diameter (mm)	Section Width (mm)	Tread Depth (mm)		
				Standard Rim	Dual	Single					
265/70R19.5	14	136/134	M	7.50	2120	725	2240	725	867	262	13.5
265/70R19.5	16	140/138	L	7.50	2360	775	2500	775	867	262	13.5
265/70R19.5	18	143/141	J	7.50	2575	850	2725	850	867	262	13.5
285/70R19.5	16	144/142	M	8.25	2650	900	2800	900	895	283	14.0
285/70R19.5	18	146/144	M	8.25	3075	900	3000	900	895	283	14.0
285/70R19.5	18	150/147	J	8.25	3075	900	3350	900	895	283	14.0
255/70R22.5	14	136/133	M	7.50	2060	700	2240	700	930	255	14.0
255/70R22.5	16	140/137	M	7.50	2300	830	2500	830	930	255	14.0
275/70R22.5	16	148/145	M	8.25	2900	900	3150	900	958	276	14.5
275/70R22.5	18	150/148	M	8.25	3150	900	3350	900	958	276	14.5

Suitable for all position axle of buses and medium trucks.

LLA28

Radial Truck Tire

Size	Ply Rating	Load Index	Speed Symbols	Max Load and Inflated Pressure			Overall Diameter (mm)	Section Width (mm)	Tread Depth (mm)	
				Standard Rim	Dual	Single				
425/65R22.5	20	162	K	12.25	---	4750	760	1124	422	17.5
425/65R22.5	18	165	J/K	13.00	---	5150	825	1124	430	17.5

Suitable for the trailer axle of the trucks running on the multi road.

KLS200

Radial truck tire (Regional Steer)

Size	Ply Rating	Load Index	Speed Symbols	Standard Rim	Max Load and Inflation Pressure			Overall Diameter (mm)	Section Width (mm)	Tread Depth (mm)	
					Dual kg	Single kpa	kg				
265/70R19.5	14	136/134	M	7.50	2120	825	2240	825	867	262	13.5
265/70R19.5	16	140/138	M	7.50	2360	775	2500	775	867	262	13.5
265/70R19.5	18	143/141	J	7.50	2575	850	2725	850	867	262	13.5
285/70R19.5	18	146/144	M	8.25	2800	900	3000	900	895	283	13.5
305/70R19.5	18	150/148	J	8.25	3150	900	3350	900	895	283	13.5
305/70R19.5	16	144/141	M	9.00	2575	760	2800	760	923	305	13.5
305/70R19.5	18	146/143	M	9.00	2725	880	3000	880	923	305	13.5
305/70R19.5	18	148/145	M	9.00	2900	850	3150	850	923	305	13.5

1. Long life.
2. Retreadability.
3. Low eccentric wear.

LDL831

Radial truck tire (Regional Drive)

Size	Ply Rating	Load Index	Speed Symbols	Standard Rim	Max Load and Inflation Pressure			Overall Diameter (mm)	Section Width (mm)	Tread Depth (mm)	
					Dual kg	Single kpa	kg				
285/70R19.5	16	140/137	M	8.25	2300	725	2500	725	895	283	19.0
285/70R19.5	18	146/144	M	8.25	2800	900	3000	900	895	283	19.0
285/70R19.5	18	150/143	J	8.25	3150	900	3350	900	895	283	19.0

1. Typical block pattern design make good grip performance.
2. High wear resistance and long life.
3. Retreadability.
4. Low eccentric wear.

F805

Radial Truck Tire

Size	Ply Rating	Load Index	Speed Symbols	Standard Rim	Max Load and Inflation Pressure			Overall Diameter (mm)	Section Width (mm)	Tread Depth (mm)	
					Dual kg	Single kpa	kg				
275/80R22.5	15	145/145	M	8.25	2900	900	3150	900	958	275	14.5

1. Special design for all position of buses and steer and trailer axle of trucks.
2. Good side-wear resistance.
3. High-speed performance.

KLD200

Radial truck tire

Size	Ply Rating	Load Index	Speed Symbols	Standard Rim	Max Load and Inflation Pressure			Overall Diameter (mm)	Section Width (mm)	Tread Depth (mm)	
					Dual kg	Single kpa	kg				
265/70R19.5	14	136/134	M	7.50	2120	825	2240	825	867	262	15.5
265/70R19.5	16	140/138	M	7.50	2360	775	2500	775	867	262	15.5
285/70R19.5	18	146/144	M	8.25	2800	900	3000	900	895	283	16.0
305/70R19.5	16	144/141	M	9.00	2575	760	2800	760	923	305	16.0
305/70R19.5	18	146/143	M	9.00	2725	830	3000	830	923	305	16.0
305/70R19.5	18	148/145	M	9.00	2900	850	3150	850	923	305	16.0

1. Typical block pattern design suitable for the drive axle of trucks.
2. Good braking and grip on the road.

F860

Radial truck tire

Size	Ply Rating	Load Index	Speed Symbols	Standard Rim	Max Load and Inflation Pressure			Overall Diameter (mm)	Section Width (mm)	Tread Depth (mm)	
					Dual kg	Single kpa	kg				
315/70R22.5	16	154/150(152/148)	L(M)	9.00	3350	900	3750	900	1014	312	15.5
315/70R22.5	18	156/150(154/150)	L(M)	9.00	3350	900	4000	900	1014	312	15.5
295/80R22.5	16	152/148	M	9.00	3150	850	3650	850	1044	298	16.0
315/80R22.5	20	156/150(154/150)	L(M)	9.00	3350	850	4000	850	1076	312	16.5
315/80R22.5	22	158/150(154/150)	L(M)	9.00	3350	900	4250	900	1076	312	16.5

1. Special design for all position of buses and steer and trailer axle of trucks.
2. Good side-wear resistance.
3. High-speed performance.

D905

Radial Truck Tire

Size	Ply Rating	Load Index	Speed Symbols	Standard Rim	Max Load and Inflation Pressure			Overall Diameter (mm)	Section Width (mm)	Tread Depth (mm)	
					Dual kg	Single kpa	kg				
295/80R22.5	16	152/148	M	9.00	3150	850	3550	850	1044	298	17.5

1. Typical block pattern design suitable for the drive axle of trucks.
2. Good braking and grip on the road.



T830

Radial Truck Tire



Size	Ply Rating	Load Index	Speed Symbols	Max Load and Inflation Pressure			Overall Diameter (mm)	Section Width (mm)	Tread Depth (mm)
				Dual kg	Single kpa	Single kg			
385/55R22.5	18	158	L	12.25	850	4250	996	386	15.5
385/55R22.5	20	160	J	12.25	900	4500	996	386	15.5

Suitable for the trailer axle of the trucks running on highway.

- 1.Low fuel consumption.

T820

Radial Truck Tire



Size	Ply Rating	Load Index	Speed Symbols	Max Load and Inflation Pressure			Overall Diameter (mm)	Section Width (mm)	Tread Depth (mm)
				Dual kg	Single kpa	Single kg			
385/55R19.5	18	156	J	12.25	900	4000	919	386	12.5
445/45R19.5	18	156	J	15.00	900	4000	895	446	15.5
445/45R19.5	20	160	J	15.00	900	4500	895	446	15.5

Suitable for the trailer axle of the trucks running on highway.

- 1.Low fuel consumption.

ETD100

Radial Truck Tire

(For international long-distance transportation)



Size	Ply Rating	Load Index	Speed Symbols	Max Load and Inflation Pressure			Overall Diameter (mm)	Section Width (mm)	Tread Depth (mm)		
				Standard Rim	Dual kg	Single kpa					
315/60R22.5	18	154/150	M	9.00	3350	825	3750	825	1076	312	17.0
315/60R22.5	20	156/150(154/150)	L(M)	9.00	3350	850	4000	850	1076	312	17.0
315/70R22.5	16	154/150(152/148)	L(M)	9.00	3350	900	3750	900	1014	312	16.5
315/70R22.5	18	156/150(154/150)	L(M)	9.00	3350	900	4000	900	1014	312	16.5
315/60R22.5	16	152/148	L	9.75	3150	900	3550	900	950	313	16.5
295/60R22.5	16	149/146	M	9.00	3000	900	3250	900	926	292	16.0

Suitable for drive axle of trucks running with high speed on highway.

- 1.Low rolling resistance, reducing fuel consumption.
- 2.Lasting grip and stability by hidden groove design, with M+S and 3PMSE marking.
- 3.New pattern design, improving mileage for long distance transportation.

ETT100

Radial Truck Tire

(For international long-distance transportation)



Size	Ply Rating	Load Index	Speed Symbols	Max Load and Inflated Pressure			Standard Rim	Overall Diameter (mm)	Section Width (mm)	Tread Depth (mm)
				Dual kg	Single kpa	kg				
385/55R19.5	18	156	J	---	---	4000	900	919	386	12.5
385/55R22.5	18	158	L	---	---	4250	850	996	386	12.0
385/55R22.5	20	160(158)	K(L)	---	---	4500	900	996	386	12.0
385/65R22.5	20	160(158)	K(L)	---	---	4500	900	1072	389	13.5
385/65R22.5	24	164(158)	K(L)	---	---	5000	900	1072	389	13.5
425/65R22.5	18	162	K	---	---	4750	760	1124	422	14.5
425/65R22.5	20	164	K	---	---	5000	830	1124	422	14.5
425/65R22.5	20	165	K	---	---	5150	830	1124	422	14.5
425/65R22.5	20	165	K	---	---	5150	825	1124	422	14.5
435/50R19.5	18	156	J	---	---	4000	850	931	438	12.5
435/50R19.5	20	160	J	---	---	4500	900	931	438	12.5
445/45R19.5	18	156	J	---	---	4000	900	895	446	12.5
445/45R19.5	20	160	J	---	---	4500	900	895	446	12.5

Suitable for trailer axle of trucks running with high speed on highway.

- 1.Low rolling resistance, reducing fuel consumption.
- 2.Lasting grip and stability by hidden groove design.
3. New pattern design ,improving mileage for long distance transportation.

ETS100

Radial Truck Tire

(For international long-distance transportation)



Size	Ply Rating	Load Index	Speed Symbols	Max Load and Inflated Pressure			Standard Rim	Overall Diameter (mm)	Section Width (mm)	Tread Depth (mm)
				Dual kg	Single kpa	kg				
315/80R22.5	18	154/150	M	---	---	3950	825	3750	825	15.0
315/80R22.5	20	156/150(154/150)	L(M)	---	---	3950	850	4000	850	15.0
315/80R22.5	22	158/150(154/150)	L(M)	---	---	3950	900	4250	900	15.0
315/70R22.5	16	154/150(152/148)	L(M)	---	---	3350	900	3750	900	10.14
315/70R22.5	18	156/150(154/150)	L(M)	---	---	3950	900	4000	900	10.14
315/60R22.5	16	152/143	L	---	---	3150	900	3550	900	9.50
315/60R22.5	18	154/150(152/148)	L(M)	---	---	3350	900	3750	900	9.50
295/60R22.5	16	149/146	M	---	---	3000	900	3250	900	9.28

Suitable for steer axle of trucks running with high speed on highway.

- 1.Low rolling resistance, reducing fuel consumption.
- 2.Lasting grip and stability by hidden groove design.
3. New pattern design ,improving mileage for long distance transportation.





LDL831

Radial truck tire (Regional Drive)

Size	Ply Rating	Load Index	Speed Symbols	Standard Rim	Max Load and Inflated Pressures			Overall Diameter (mm)	Section Width (mm)	Tread Depth (mm)	
					Dual kg	kpa	Single kg				
245/70R17.5	14	134/132	M	7.50	2000	775	2120	775	789	248	18.0
245/70R17.5	16	136/134	M	7.50	2120	850	2240	850	789	248	18.0
245/70R17.5	18	143/141	J	7.50	2575	875	2725	875	789	248	18.0
215/75R17.5	14	126/124	M	6.00	1600	700	1700	700	767	212	16.0
215/75R17.5	16	135/133	J	6.00	2060	850	2180	850	767	212	16.0
235/75R17.5	14	132/130	M	6.75	1900	775	2000	775	797	233	17.0
235/75R17.5	16	141/140	J	6.75	2500	850	2575	850	797	233	17.0
235/75R17.5	18	143/141	J	6.75	2575	875	2725	875	797	233	17.0

1. Typical block pattern design make good towing and grip on wet and dry road.
2. Strong wear resistance and long life.
3. Retreadability.



KLS200

Radial truck tire (Regional all position)

Size	Ply Rating	Load Index	Speed Symbols	Standard Rim	Max Load and Inflated Pressures			Overall Diameter (mm)	Section Width (mm)	Tread Depth (mm)	
					Dual kg	kpa	Single kg				
215/75R17.5	14	126/124	M	6.00	1600	700	1700	700	767	212	12.5
215/75R17.5	16	135/133	J	6.00	2060	850	2180	850	767	212	12.5
225/75R17.5	12	126/125	M	6.75	1650	675	1700	675	783	226	12.5
225/75R17.5	14	129/127	M	6.75	1750	725	1850	725	783	226	12.5
235/75R17.5	14	132/130	M	6.75	1900	775	2000	775	797	233	12.5
235/75R17.5	16	141/140	J	6.75	2500	850	2575	850	797	233	12.5
235/75R17.5	18	143/141	J	6.75	2575	875	2725	875	797	233	12.5
245/70R17.5	14	134/132	M	7.50	2000	775	2120	775	789	248	12.5
245/70R17.5	16	136/134	M	7.50	2120	850	2240	850	789	248	12.5
245/70R17.5	18	143/141	J	7.50	2575	875	2725	875	789	248	12.5
245/70R19.5	12	129/127	M	7.50	1750	660	1850	660	839	248	12.5
245/70R19.5	14	133/131	M	7.50	1950	760	2060	760	839	248	12.5
245/70R19.5	14	133/131	M	7.50	1950	750	2060	750	839	248	12.5
245/70R19.5	16	136/134	M	7.50	2120	825	2240	825	839	248	12.5

Suitable for medium trucks running on the high-grade road.

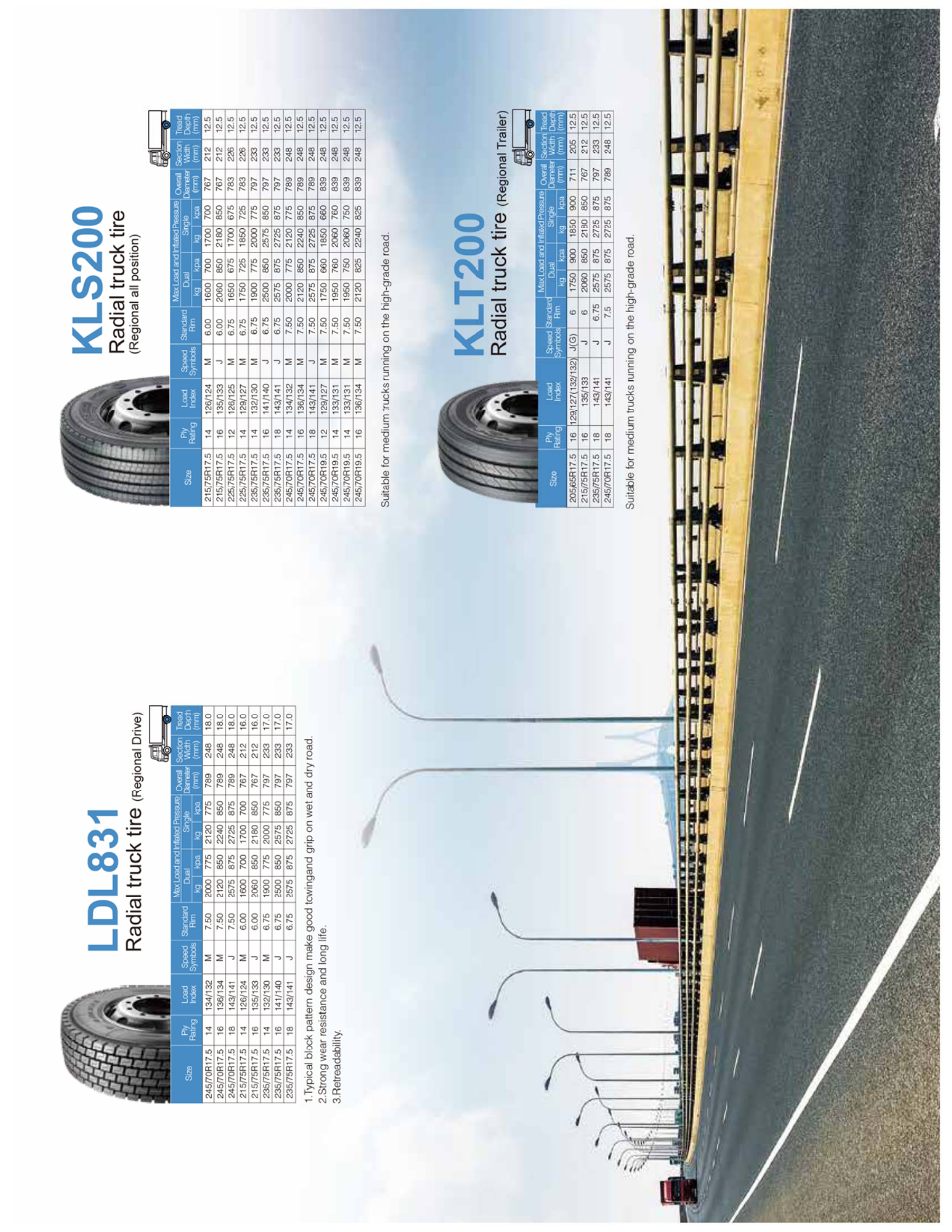


KLT200

Radial truck tire (Regional Trailer)

Size	Ply Rating	Load Index	Speed Symbols	Standard Rim	Max Load and Inflated Pressures			Overall Diameter (mm)	Section Width (mm)	Tread Depth (mm)	
					Dual kg	kpa	Single kg				
205/65R17.5	16	129/127(132/132)	J(G)	6	1750	900	1850	900	711	205	12.5
215/75R17.5	16	135/133	J	6	2060	850	2180	850	767	212	12.5
235/75R17.5	18	143/141	J	6.75	2575	875	2725	875	797	233	12.5
245/70R17.5	18	143/141	J	7.5	2575	875	2725	875	789	248	12.5

Suitable for medium trucks running on the high-grade road.



KLD200

Radial truck tire
(Regional drive)



Size	Ply Rating	Load Index	Speed Symbols	Standard Rim	Max Load and Inflation Pressure			Overall Diameter (mm)	Section Width (mm)	Tread Depth (mm)	
					Dual kg	Single kg	kPa				
215/75R17.5	14	126/124	M	6.00	1600	700	1700	700	767	212	14.0
225/75R17.5	12	126/125	M	6.75	1650	675	1700	675	783	226	14.5
225/75R17.5	14	129/127	M	6.75	1750	725	1850	725	783	226	14.5
235/75R17.5	14	132/130	M	6.75	1900	775	2000	775	797	233	14.5
245/70R17.5	14	134/132	M	7.50	2000	775	2120	775	789	248	14.5
245/70R17.5	16	136/134	M	7.50	2120	850	2240	850	789	248	14.5
245/70R19.5	12	129/127	M	7.50	1750	660	1850	660	839	248	14.5
245/70R19.5	14	133/131	M	7.50	1950	760	2060	760	839	248	14.5
245/70R19.5	16	136/134	M	7.50	2120	825	2240	825	839	248	14.5

Suitable for medium trucks running on the high-grade road.

LFL866

Radial truck tire
(Regional all position)



Size	Ply Rating	Load Index	Speed Symbols	Standard Rim	Max Load and Inflation Pressure			Overall Diameter (mm)	Section Width (mm)	Tread Depth (mm)	
					Dual kg	Single kg	kPa				
205/65R17.5	16	129/127(132/132)	J(G)	6.00	1750	900	1850	900	711	205	12.5
245/70R17.5	14	134/132	M	7.50	2000	775	2120	775	789	248	14.5
245/70R17.5	16	136/134	M	7.50	2120	850	2240	850	789	248	14.5
245/70R17.5	18	143/141	J	7.50	2575	875	2725	875	789	248	14.5
215/75R17.5	14	126/124	M	6.00	1600	700	1700	700	767	212	14.5
215/75R17.5	16	135/133	J	6.00	2060	850	2180	850	767	212	14.5

- 1.Extra wide tread design for high mileage and even wear.
- 2.Zig-zag grooves for excellent handling.
- 3.Optimize structure design.



LAU609

Radial bus tire
(Urban all position)

Size	Ply Rating	Load Index	Speed Symbols	Standard Rim	Max Load and Inflation Pressure			Overall Diameter (mm)	Section Width (mm)	Tread Depth (mm)	
					Dual kg	Single kg	kPa				
275/70R22.5	16	148/145(152/148)	J(E)	8.25	2900	900	3150	900	958	276	21.0
275/70R22.5	18	150/148(152/148)	J(E)	8.25	3150	900	3350	900	958	276	21.0

- 1.Enhanced sidewall ensures high safety.
- 2.Tire strength is increased by 35%,with application of ST steel cord.
- 3.Tire bead cracking is prevented,with application fiber layer in bead area.

LLA01

Radial Truck Tire

(On&Off Road all position)



Size	Ply Rating	Load Index	Speed Symbols	Standard Rim	Max Load and Inflation Pressure			Overall Diameter (mm)	Section Width (mm)	Tread Depth (mm)
					Dual	Single	Inflated Pressure			
				kg	kpa	kg	kpa	(mm)	(mm)	
13R22.5	18	156/150	K	9.75	3350	875	4000	875	1124	320
13R22.5	20	158/156	K	9.75	4000	900	4250	900	1124	320

1. Typical combined pattern.
2. Cut resistance compound.
3. Good braking and grip.

LLA38

Radial Truck Tire

(On&Off Road trailer)



Size	Ply Rating	Load Index	Speed Symbols	Standard Rim	Max Load and Inflation Pressure			Overall Diameter (mm)	Section Width (mm)	Tread Depth (mm)
					Dual	Single	Inflated Pressure			
				kg	kpa	kg	kpa	(mm)	(mm)	
385/65R22.5	13	158	L	12.25	---	---	4250	850	996	386
385/65R22.5	20	160	J	12.25	---	---	4500	900	996	386
385/65R22.5	13	158	K	11.75	---	---	4250	850	1072	389
385/65R22.5	20	160	J	11.75	---	---	4500	900	1072	389
425/65R22.5	13	162	K	12.25	---	---	4750	760	1124	422
425/65R22.5	20	165	J/K	13.00	---	---	5150	825	1124	430
445/65R22.5	20	168	J/K	13.00	---	---	5600	830	1150	444
445/65R22.5	20	169	J	14.00	---	---	5800	900	1150	454

1. Typical combined pattern.
2. Cut resistance compound.
3. Good braking and grip.

LLA08

Radial Truck Tire

(On&Off Road all position)



Size	Ply Rating	Load Index	Speed Symbols	Standard Rim	Max Load and Inflation Pressure			Overall Diameter (mm)	Section Width (mm)	Tread Depth (mm)
					Dual	Single	Inflated Pressure			
				kg	kpa	kg	kpa	(mm)	(mm)	
12.00R20	18	154/151	K	8.5	3450	830	3750	830	1125	315
12.00R24	18	156/153	K	8.5	3650	775	4000	775	1226	313
12.00R24	20	160/156	K	8.5	4000	850	4500	850	1226	313
11R22.5	14	144/142	K	8.25	2650	720	2800	720	1054	279
11R22.5	16	146/143	K	8.25	2725	830	3000	830	1054	279
11R22.5	16	148/145	K	8.25	2900	850	3150	850	1054	279
12R22.5	16	152/148	K	9.00	3150	850	3550	850	1084	300
315/60R22.5	18	154/150	M	9.00	3350	825	3750	825	1076	312
315/60R22.5	20	156/150	L	9.00	3350	850	4000	850	1076	312
315/60R22.5	22	158/150	K	9.00	3350	900	4250	900	1076	312

1. Typical combined pattern.
2. Cut resistance compound.
3. Good braking and grip.





KXA400 Radial Truck Tire (On&Off Road)

Size	Ply Rating	Load Index	Speed Symbols	Standard Rim	Max.Load and Inflated Pressure			Overall Diameter (mm)	Section Width (mm)	Tread Depth (mm)
					Dual kg	Single kpa	Single kpa			
425/65R22.5	20	165	K	13.00	---	5150	825	1124	430	18.5

Suitable for trailer and steer axle of trucks under all kinds of working conditions.

- 1.Thick sidewall design protect against sidewall impacts and bruises.
- 2.Stone rejection design protect groove bottom from stone puncture.
- 3.Lasting grip and stability ,with M+S and 3PMSF marking.



KMD400 Radial Truck Tire (On&Off Road)

Size	Ply Rating	Load Index	Speed Symbols	Standard Rim	Max.Load and Inflated Pressure			Overall Diameter (mm)	Section Width (mm)	Tread Depth (mm)	
					Dual kg	Single kpa	Single kpa				
13R22.5	18	156/150	K	9.75	3350	875	4000	875	1124	320	21.0
315/80R22.5	18	154/150	K	9.00	3350	825	3750	825	1076	312	21.0
315/60R22.5	20	156/150	K	9.00	3350	850	4000	850	1076	312	21.0

Suitable for drive axle of trucks under all kinds of working conditions.

- 1.Thick sidewall design protect against sidewall impacts and bruises.
- 2.Stone rejection design protect groove bottom from stone puncture.
- 3.Lasting grip and stability ,with M+S and 3PMSF marking.



KMA400 Radial Truck Tire (On&Off Road)

Size	Ply Rating	Load Index	Speed Symbols	Standard Rim	Max.Load and Inflated Pressure			Overall Diameter (mm)	Section Width (mm)	Tread Depth (mm)	
					Dual kg	Single kpa	Single kpa				
13R22.5	18	156/150	K	9.75	3350	875	4000	875	1124	320	19.0
13R22.5	20	158/156	K	9.75	4000	900	4250	900	1124	320	19.0
295/80R22.5	16	152/148	K	9.00	3150	850	3550	850	1044	298	19.0
295/80R22.5	18	152/149	K	9.00	3250	900	3550	900	1044	298	19.0
295/80R22.5	18	154/149	K	9.00	3350	850	3750	850	1044	298	19.0
315/80R22.5	18	154/150	K	9.00	3350	825	3750	825	1076	312	19.0
315/80R22.5	20	156/150	K	9.00	3350	850	4000	850	1076	312	19.0
315/80R22.5	22	158/150	K	9.00	3350	900	4250	900	1076	312	19.0
425/65R22.5	20	165	K	12.25	---	---	5150	825	1124	422	18.5
445/65R22.5	20	169	K	14.00	---	---	5800	900	1150	454	18.5

Suitable for all position axle of trucks under all kinds of working conditions.

- 1.Thick sidewall design protect against sidewall impacts and bruises.
- 2.Stone rejection design protect groove bottom from stone puncture.
- 3.Lasting grip and stability ,with M+S and 3PMSF marking.





KWWD600

Radial Truck Tire on Ice and Snow



Size	Ply Rating	Load Index	Speed Symbols	Standard Rim	Max Load and Inflated Pressure			Overall Diameter (mm)	Section Width (mm)	Tread Depth (mm)	
					Dual kg	Single kg	kpa				
295/80R22.5	16	152/148	M	9.00	3150	850	3550	850	1044	298	20.5
315/70R22.5	16	154/150(152/148)	L(M)	9.00	3350	900	3750	900	1014	312	20.0
315/70R22.5	18	156/150(154/150)	L(M)	9.00	3350	900	4000	900	1014	312	20.0
315/80R22.5	18	154/150	K	9.00	3350	825	3750	850	1076	312	22.0
315/80R22.5	20	156/150	K	9.00	3350	850	4000	850	1076	312	22.0

Suitable for steer axle of trucks under snow condition.

1. Lasting grip and stability ,with M+S and 3PMSF marking.
2. Optimized rib contact combats uneven wear and improves wet handling and braking.

KWS600

Radial Truck Tire on Ice and Snow



Size	Ply Rating	Load Index	Speed Symbols	Standard Rim	Max Load and Inflated Pressure			Overall Diameter (mm)	Section Width (mm)	Tread Depth (mm)	
					Dual kg	Single kg	kpa				
295/80R22.5	16	152/148	M	9.00	3150	850	3550	850	1044	298	16.0
295/80R22.5	18	154/149	M	9.00	3250	850	3750	850	1044	298	16.0
315/70R22.5	18	156/150(154/150)	L(M)	9.00	3350	900	4000	900	1014	312	15.0
315/80R22.5	20	156/150(154/150)	L(M)	9.00	3350	850	4000	850	1076	312	15.5
315/80R22.5	22	158/150(154/150)	L(M)	9.00	3350	900	4250	900	1076	312	15.5
385/65R22.5	18	168	L	12.25	---	---	4250	850	996	386	14.5
385/65R22.5	20	160(158)	K(L)	12.25	---	---	4500	900	996	386	14.5
385/65R22.5	20	160(158)	K(L)	11.75	---	---	4500	900	1072	389	15.5
385/65R22.5	24	164(158)	K(L)	11.75	---	---	5000	900	1072	389	15.5

Suitable for steer axle of trucks under snow condition.

1. Lasting grip and stability ,with M+S and 3PMSF marking.
2. Optimized rib contact combats uneven wear and improves wet handling and braking.

LDW807

Radial Truck Tire on Ice and Snow (Drive)



Size	Ply Rating	Load Index	Speed Symbols	Standard Rim	Max Load and Inflated Pressure			Overall Diameter (mm)	Section Width (mm)	Tread Depth (mm)	
					Dual kg	Single kg	kpa				
315/80R22.5	18	154/150	K	9.00	3350	825	3750	825	1076	312	20.0
315/80R22.5	20	156/150	K	9.00	3350	850	4000	850	1076	312	20.0

1. High safety and good handling.

2. Optimized rib contact combats uneven wear and improves wet handling and braking.
3. Long life.